

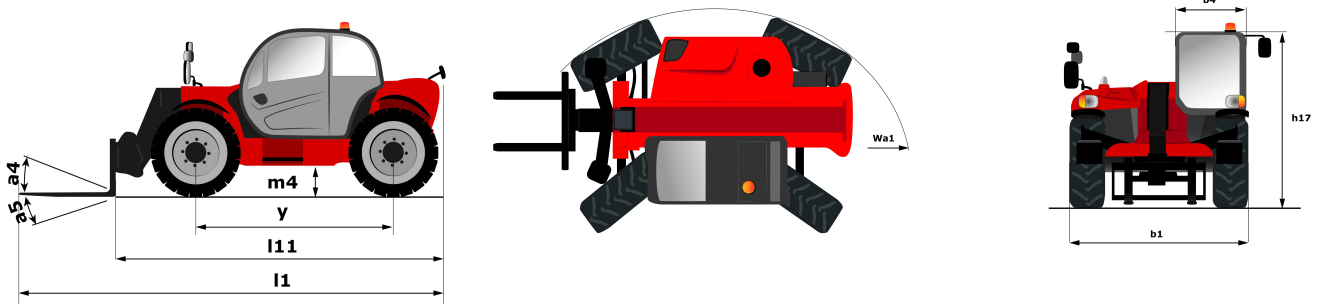
Technical sheet :

MT 1033 EASY



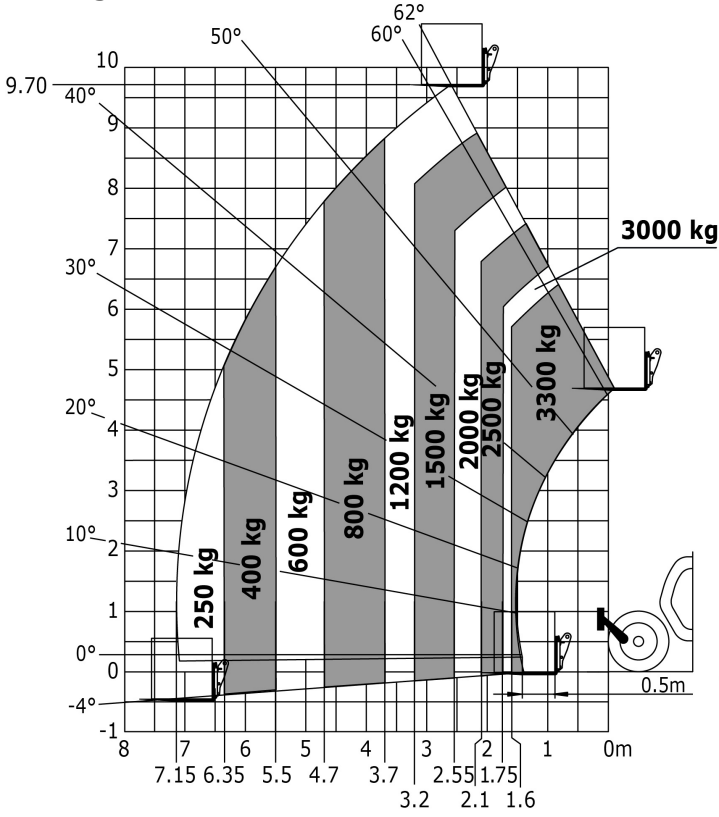
| Capacities | | Metric | Imperial |
|--|-----------|--|--|
| Max. capacity | Q | 3300 kg | 7275 lbs |
| Max. lifting height | h3 | 9.98 m | 32 ft 9 in |
| Max. Reach | l4 | 7.15 m | 23 ft 5 in |
| Breakout force with bucket | | 5330 daN | 5330 daN |
| Weight and dimensions | | | |
| Overall length to carriage | l11 | 4.93 m | 16 ft 2 in |
| Overall width | b1 | 2.33 m | 7 ft 8 in |
| Overall height | h17 | 2.3 m | 7 ft 7 in |
| Wheelbase | y | 2.69 m | 8 ft 10 in |
| Ground clearance | m4 | 0.45 m | 1 ft 6 in |
| Overall cab width | b4 | 0.89 m | 2 ft 11 in |
| Tilt-up angle | a4 | 12 ° | 12 ° |
| Outer turning radius | Wa3 | 3.8 m | 12 ft 6 in |
| Unladen weight (with forks) | | 7790 kg | 17174 lbs |
| Tyres type | | Pneumatic | Pneumatic |
| Standard tyres | | Alliance 400/80 - 24 - 162A8 | Alliance 400/80 - 24 - 162A8 |
| Forks length / width / section | l / e / s | 1200 mm x 125 mm x 45 mm | 47.244 in x 4.921 in x 1.772 in |
| Performances | | | |
| Lifting | | 6.7 s | 6.7 s |
| Lowering | | 5.4 s | 5.4 s |
| Extension | | 13.6 s | 13.6 s |
| Retraction | | 8.7 s | 8.7 s |
| Scoop | | 2.7 s | 2.7 s |
| Crowd | | 2.7 s | 2.7 s |
| Dump | | 2.3 s | 2.3 s |
| Engine | | | |
| Engine brand | | Deutz | Deutz |
| Engine norm | | Stage 5 / Tier IV Final | Stage 5 / Tier IV Final |
| Engine model | | TD 3.6 L | TD 3.6 L |
| Number of cylinders / Capacity of cylinders | | 4 - 3621 cm ³ | 4 - 220.97 in ³ |
| I.C. Engine power rating - Power (kW) | | 75 Hp / 55.4 kW | 75 Hp / 55.4 kW |
| Max. torque / Engine rotation | | 340 @ 1600 tr/min | 340 @ 1600 tr/min |
| Drawbar pull (Laden) | | 8580 daN | 8580 daN |
| Transmission | | | |
| Transmission type | | Torque Converter | Torque Converter |
| Number of gears (forward / reverse) | | 4 / 4 | 4 / 4 |
| Travel speed (laden) | | 24.9 km/h | 15.5 mph |
| Max. travel speed (may vary according to applicable regulations) | | 24.9 km/h | 15.5 mph |
| Parking brake | | Manual | Manual |
| Service brake | | Oil-immersed multi-discs braking on front & rear axles | Oil-immersed multi-discs braking on front & rear axles |
| Hydraulics | | | |
| Hydraulic pump type | | Gear Pump | Gear Pump |
| Hydraulic flow / Pressure | | 92.7 l/min / 250 Bar | 92.7 l/min / 17 PSI |
| Tank capacities | | | |
| Engine oil | | 10 l | 2.2 gal |
| Hydraulic oil | | 128 l | 28.16 gal |
| Fuel tank | | 120 l | 26.4 gal |
| Noise and vibration | | | |
| Noise at driving position (LpA) | | 79 dB(A) | 79 dB(A) |
| Noise to environment (LwA) | | 104 dB(A) | 104 dB(A) |
| Vibration on hands/arms | | 2.5 Nm | 8.2 ft/s |
| Miscellaneous | | | |
| Steering wheels (front / rear) | | 2 / 2 | 2 / 2 |
| Drive wheels (front / rear) | | 2 / 2 | 2 / 2 |
| Safety / Safety cabin homologation | | Standard EN 15000 / Cab ROPS - FOPS Level 2 | Standard EN 15000 / Cab ROPS - FOPS Level 2 |
| Controls | | JSM | JSM |

Dimensional drawing

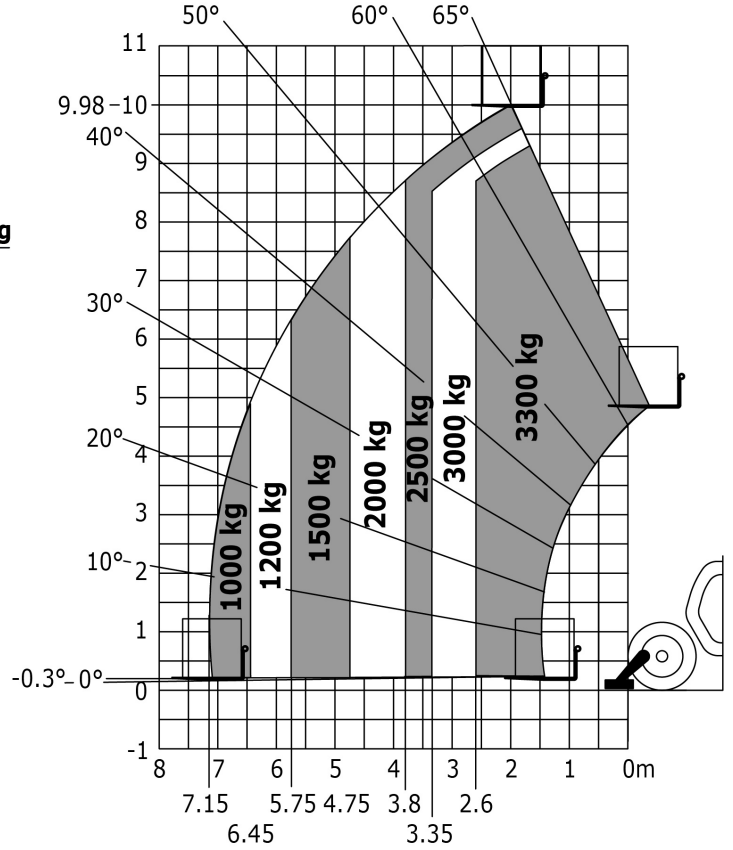


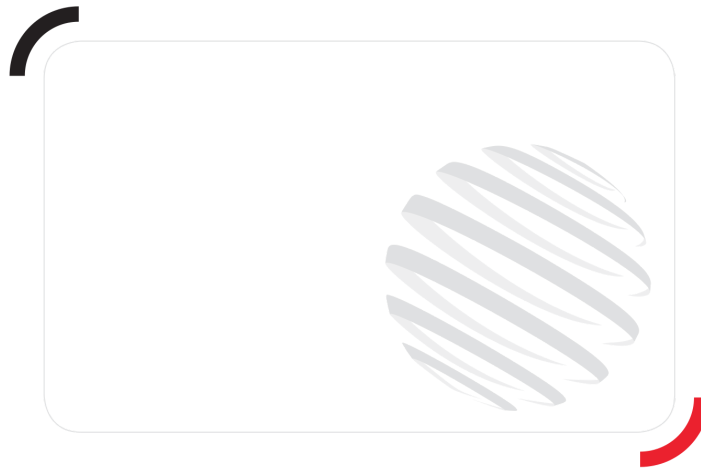
Load chart

Rough terrain load chart (EN 1459 B) Metric



Machine on stabilizers with forks Metric





Siège Social

430 rue de l'Aubinière - 44150 Ancenis Cedex - France

Tel: +33(0)2 40 09 10 11 - Fax: +33 (0)2 40 09 10 97

www.manitou.com



This brochure describes versions and configuration options for Manitou products which may be fitted with different equipment. The equipment described in this brochure may be standard, optional or not available depending on version. Manitou reserves the right to change the specifications shown and described at any time and without prior warning. The manufacturer is not liable for the specifications given. For more information, contact your Manitou dealer. Non-contractual document. Product descriptions may differ from actual products. List of specifications is not comprehensive. The logos and visual identity of the company are the property of Manitou and may not be used without authorisation. All rights reserved. The photos and diagrams contained in this brochure are provided for information only.

MANITOU BF SA - Limited company with board of directors - Share capital: 39,547,824 euros - 857 802 508
RCS Nantes