

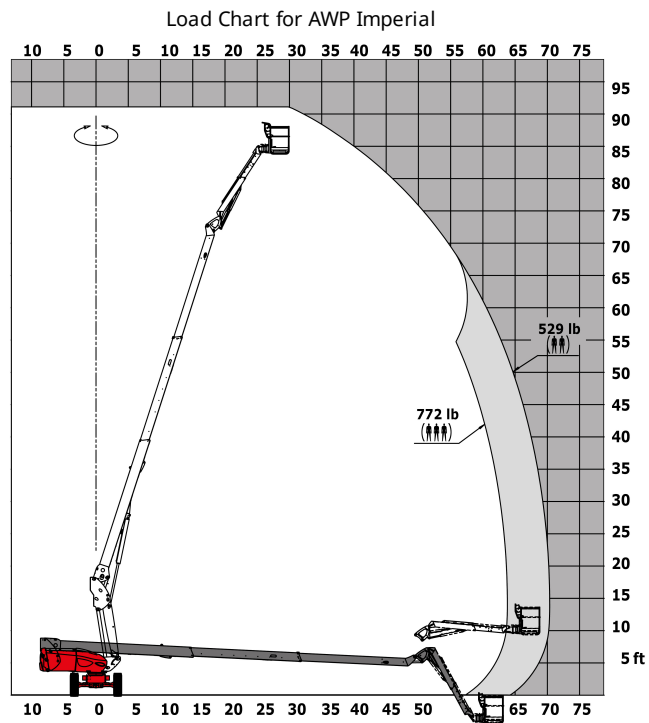
Technical sheet :

TJ 85

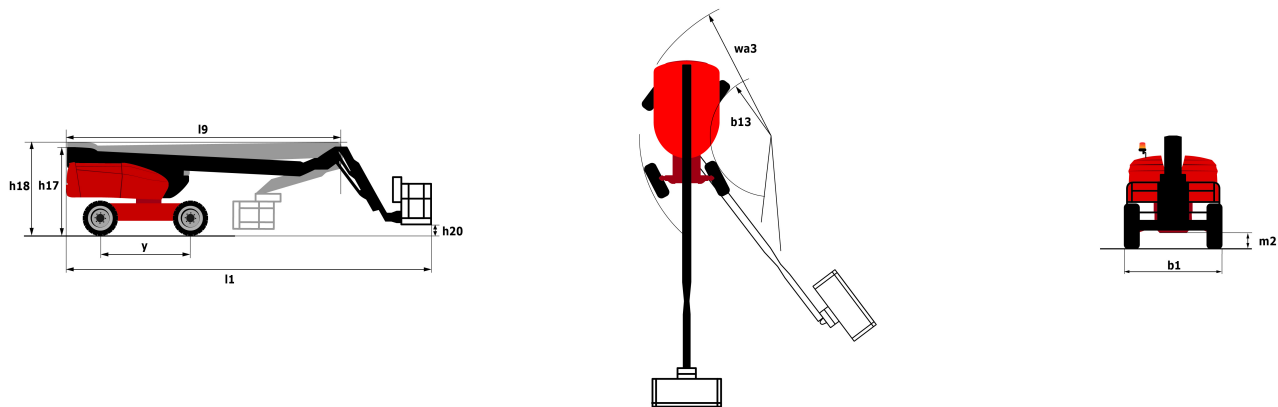


Capacities		Imperial
Working height	h21	91 ft 10 in
Platform height	h7	84 ft 6 in
Max. outreach	r1	70 ft 4 in
Pendular arm rotation (bottom)		±62 °
Platform capacity / capacity (maximum)	Q	529 lbs / 772 lbs
Turret rotation		360 °
Platform rotation (right / left)		90 ° / 90 °
Number of people (inside / outside)		2 / 3
Weight and dimensions		
Platform weight*		36350 lbs
Platform dimensions (length x width)	lp / ep	7 ft 7 in x 2 ft 11 in
Overall width	b1	8 ft 2 in
Overall length	l1	37 ft 3 in
Overall height	h17	8 ft 11 in
Overall length (stowed)	l9	26 ft 7 in
Overall height (stowed)	h18	8 ft 11 in
Floor height (access)	h20	1 ft 7 in
Jib length	l13	12 ft 6 in
Counterweight offset (turret at 90°)	a7	4 ft 8 in
Internal turning radius (over tyres)	b13	6 ft 6 in
External turning radius	Wa3	14 ft 3 in
Ground clearance at centre of wheelbase	m2	1 ft 4 in
Wheelbase	y	9 ft 2 in
Performances		
Drive speed - stowed		2.8 mph
Drive speed - raised		0.5 mph
Gradeability		37.5 %
Wheels		
Tyres type		Solid Tyres Cured-On
Drive wheels (front / rear)		2 / 2
Steering wheels (front / rear)		2 / 2
Braking wheels (front / rear)		2 / 2
Engine/Battery		
Engine brand / model		Kubota - D1803-CR-TIE4B
I.C. Engine power rating / Power (kW)		49.6 Hp / 37 kW
Miscellaneous		
Ground Pressure		322.71 PSI
Hydraulic Pressure		28 PSI
Hydraulic tank capacity		24.83 US gal
Fuel tank		19.02 US gal
Sound level at platform		0.5 dB(A)
Vibration on hands/arms		< 0 ft/s
Standards compliance		
This machine is in compliance with:		ANSI A92.20-2018 CSA B354.6 ICES-002-Issue 6 Standard Canadian EMC

Load chart



Dimensional drawing



Equipment

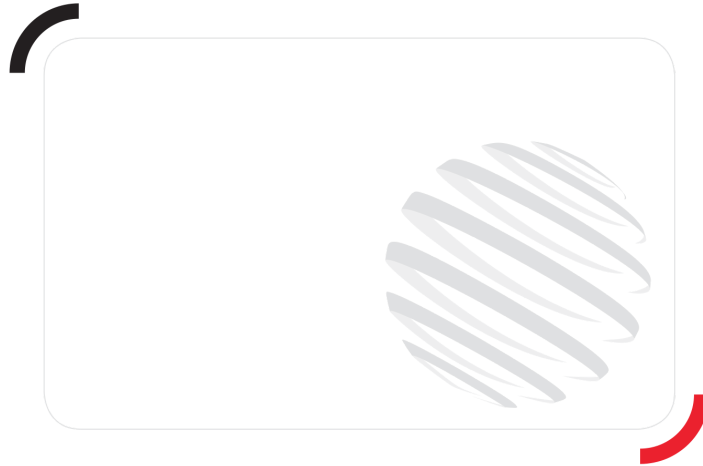
Standard

- 4 simultaneous movements
- 4 wheel drive
- 4 wheel steer with crab mode
- Audible alarm and illuminated indicator lamp (leveling, overload, lowering)
- Backup electrical pump
- Basket 2,300 mm
- Battery cut-off
- CAN bus technology
- Continuous turret rotation
- Dead man pedal
- Differential locking on rear axle
- Electronic platform compensation
- Emergency stop button in platform and on frame
- Engine on swivel chair
- Front axle with limited slip
- Fuel gauge with low level indicator
- Horn in the platform
- Hour meter
- Lift and drive
- Oscillating front axle
- Remote control for transport
- Telescopic jib
- Water heater

Optional

- Air predisposition
- Beep on every movement
- Beep upon travel
- Biodegradable oil
- Catalytic cleaner
- Coded anti-start
- Cold weather kit
- Initial verification report before putting into service
- Key lock on fuel tank
- Lockable fuel cap
- Non-marking tyres
- Non-marking tyres

Optional
Onboard generator (3,5 or 5 kW)
Onboard generator (5 kW)
Personalized paintwork
Refinery kit
SMS : Safe Man System
Safety harness
Screen protection on the lower box control
Welder ready package
Working light



Siège Social
430 rue de l'Aubinière - 44150 Ancenis Cedex - France
Tel: +33(0)2 40 09 10 11 - Fax: +33 (0)2 40 09 10 97
www.manitou.com



This brochure describes versions and configuration options for Manitou products which may be fitted with different equipment. The equipment described in this brochure may be standard, optional or not available depending on version. Manitou reserves the right to change the specifications shown and described at any time and without prior warning. The manufacturer is not liable for the specifications given. For more information, contact your Manitou dealer. Non-contractual document. Product descriptions may differ from actual products. List of specifications is not comprehensive. The logos and visual identity of the company are the property of Manitou and may not be used without authorisation. All rights reserved. The photos and diagrams contained in this brochure are provided for information only.

MANITOU BF SA - Limited company with board of directors - Share capital: 39,668,399 euros - 857 802 508
RCS Nantes